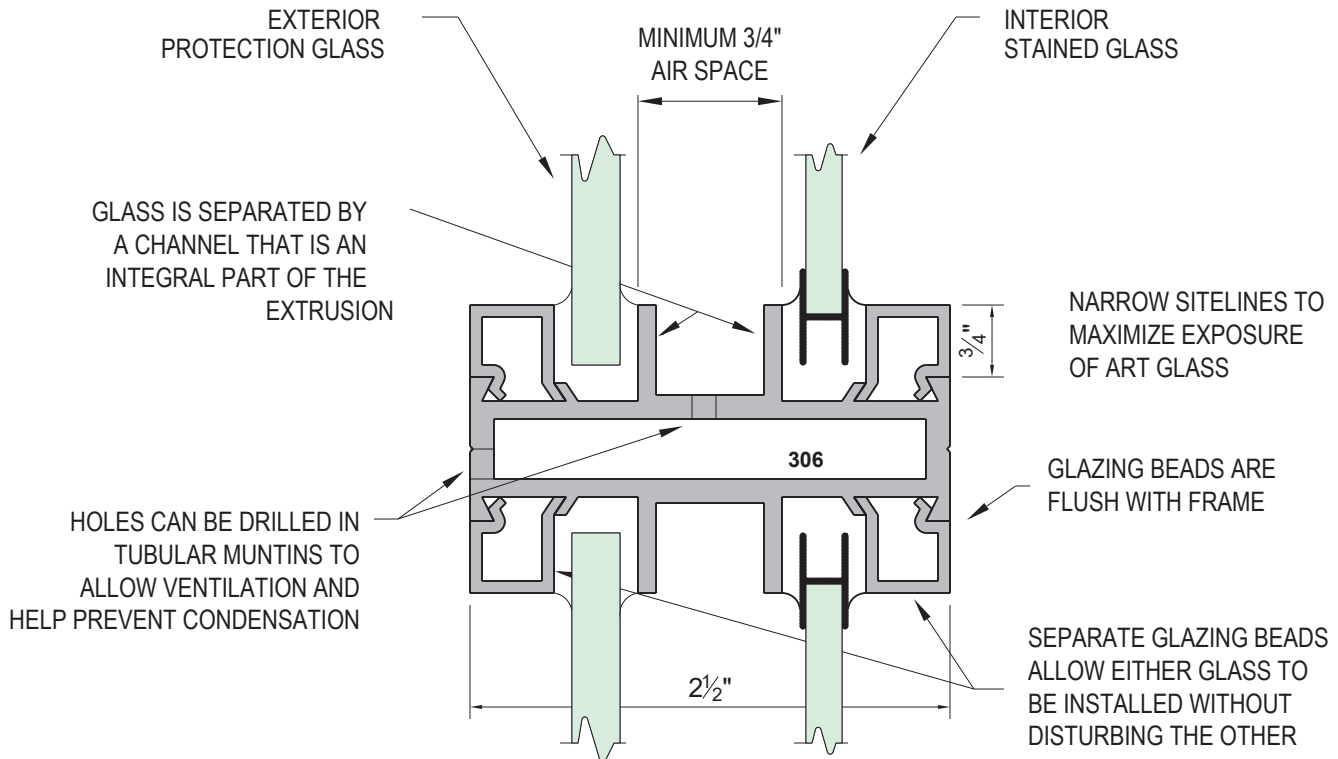




The 300 series is the aluminum double glazed church window that has been the "standard" of the industry for over 40 years. It is specially designed to receive stained glass on the interior and protective glass on the exterior. This "Double Glazing" protects the stained glass from vandalism while also insulating from the heat and cold and reduces outside noise infiltration. The insurance and fuel costs can be substantially lower as a result of this "Double Glazing".



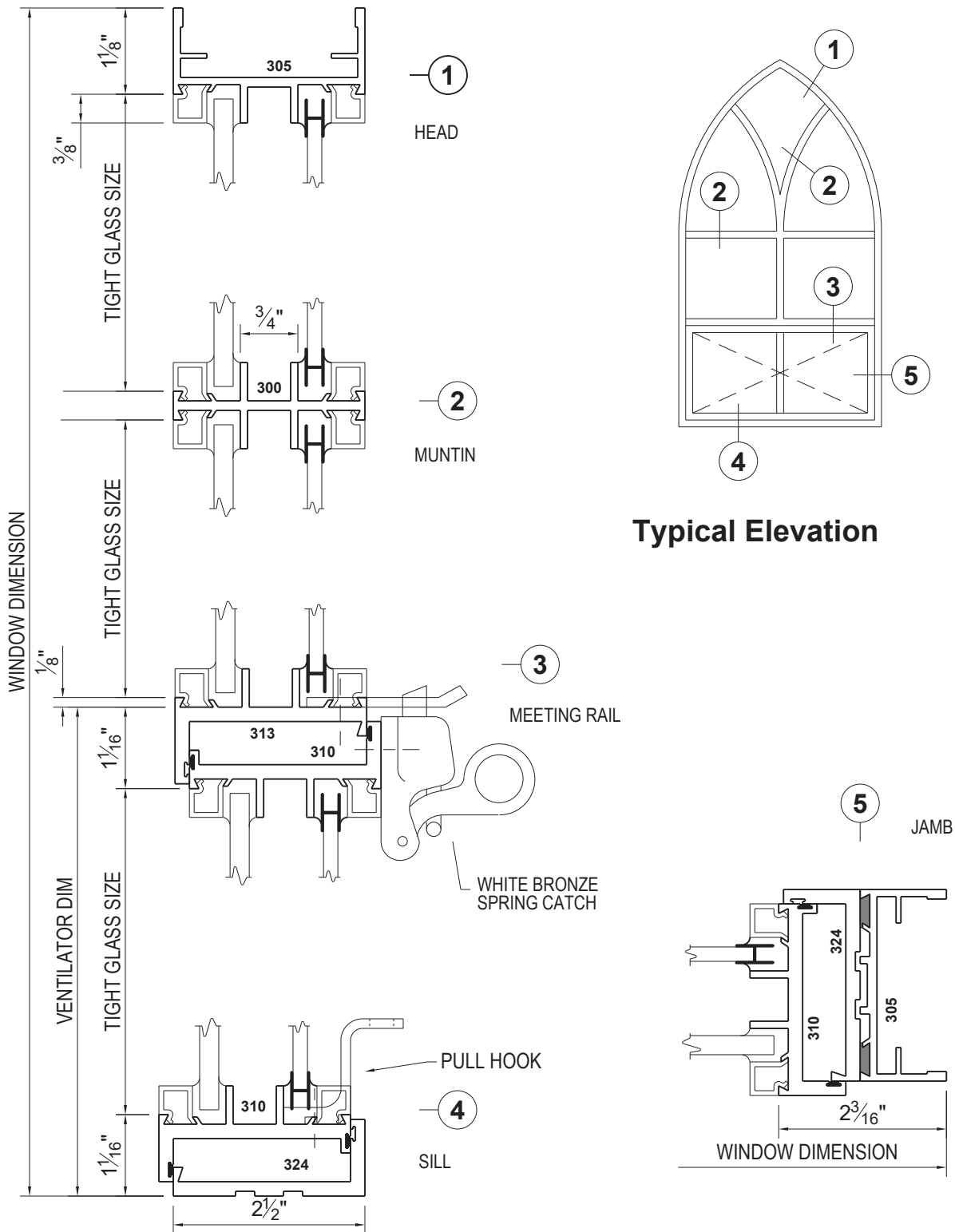
Features:

SCALE = FULL SIZE

- All frame and sash members are a full 2½" deep.
- A minimum ¾" air space between the art and protection glass without the aid of back putty to maximize the benefit of Double Glazing (*anything less is a false economy*).
- The channel that separates the glass is an integral part of the extrusion that also acts as a condensation gutter, and helps prevent theft, and air and water leakage.
- Either glass can be installed or replaced without disturbing the other. The exterior glass can be installed at time of erection to close up the building and the stained glass installed at a later date of the churches own convenience or when the necessary funds are available. (*Art glass can be an excellent fund raiser.*)
- Ventilators are available as project-in, project-out and the standard horizontally center pivoted. (*Center pivoted vents are recommended because the weight of the sash is evenly balanced for ease of operation and chain operation is a safe alternative to window poles.*)
- All double glazed ventilators are of overlap design to minimize sitalines.
- The 300 Series is interchangeable with and lines up with the 400 Series.



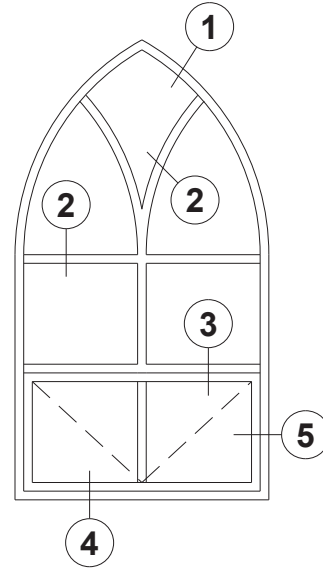
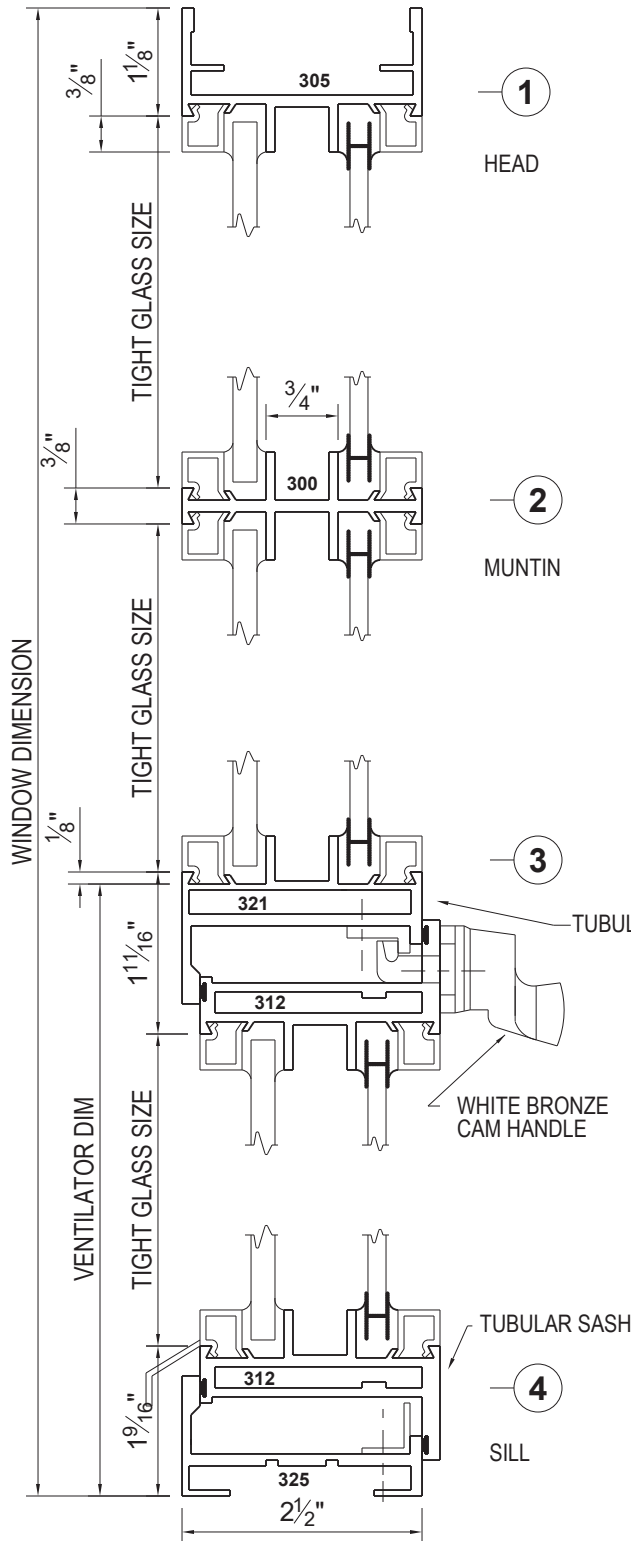
FIXED OVER CENTER-PIVOT VENT



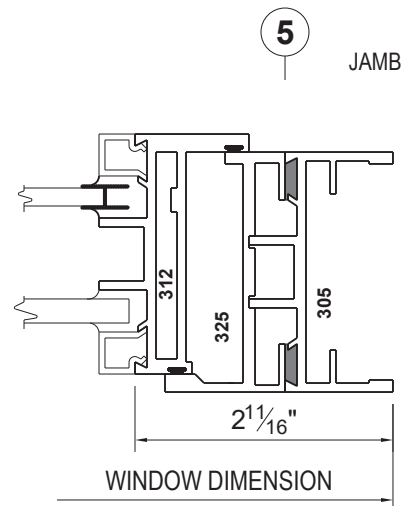
Typical Elevation



FIXED OVER PROJECT-IN VENT



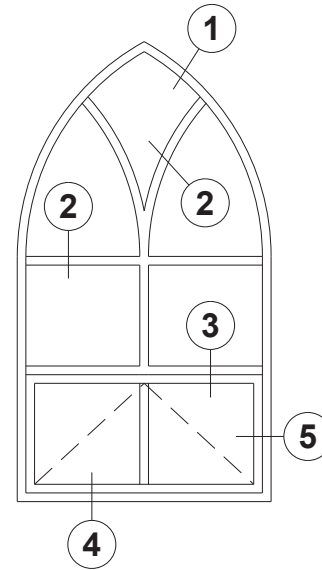
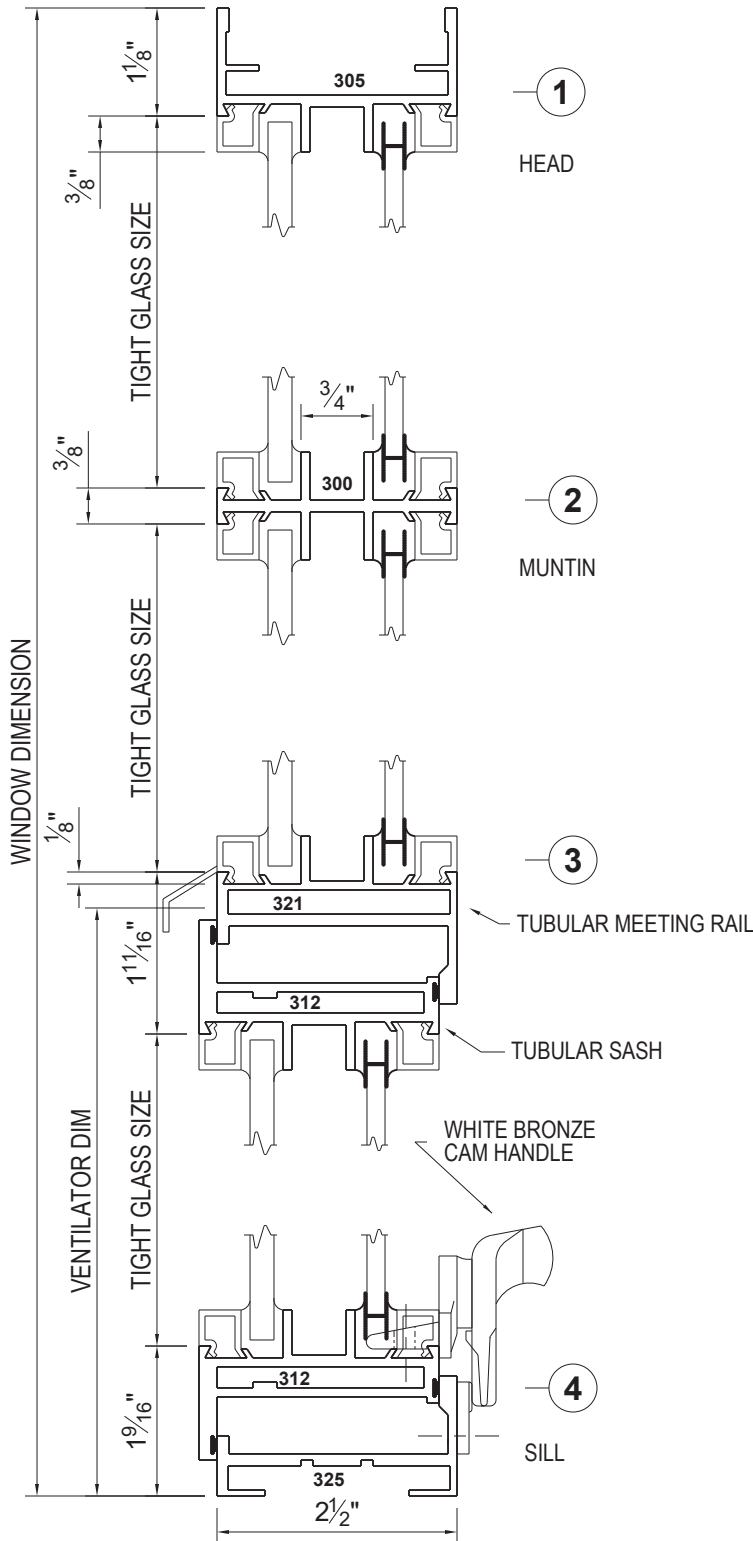
Typical Elevation



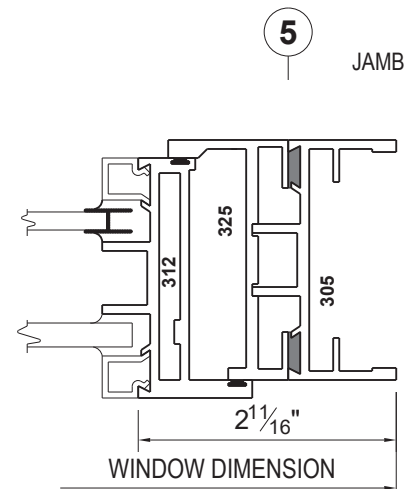
SCALE = HALF SIZE



FIXED OVER PROJECT-OUT VENT



Typical Elevation



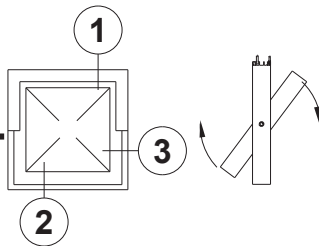
SCALE = HALF SIZE



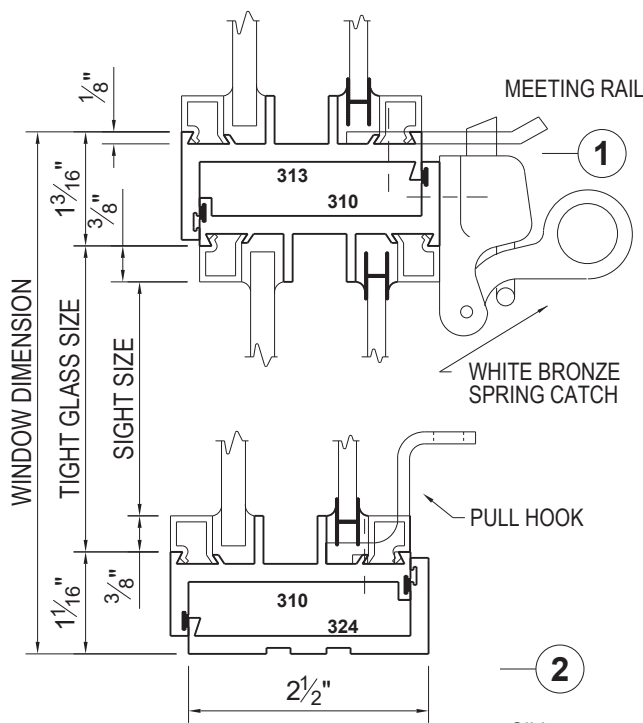
Since 1906

America's finest custom windows

CENTER-PIVOT



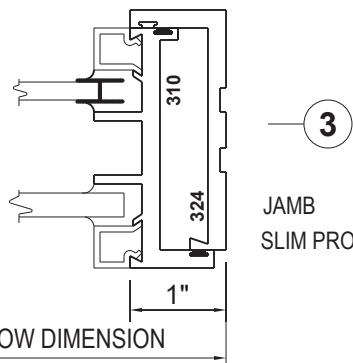
Standard Bottom Ventilator
(glass on top, flat jambs and sill)



②

SILL
FLAT

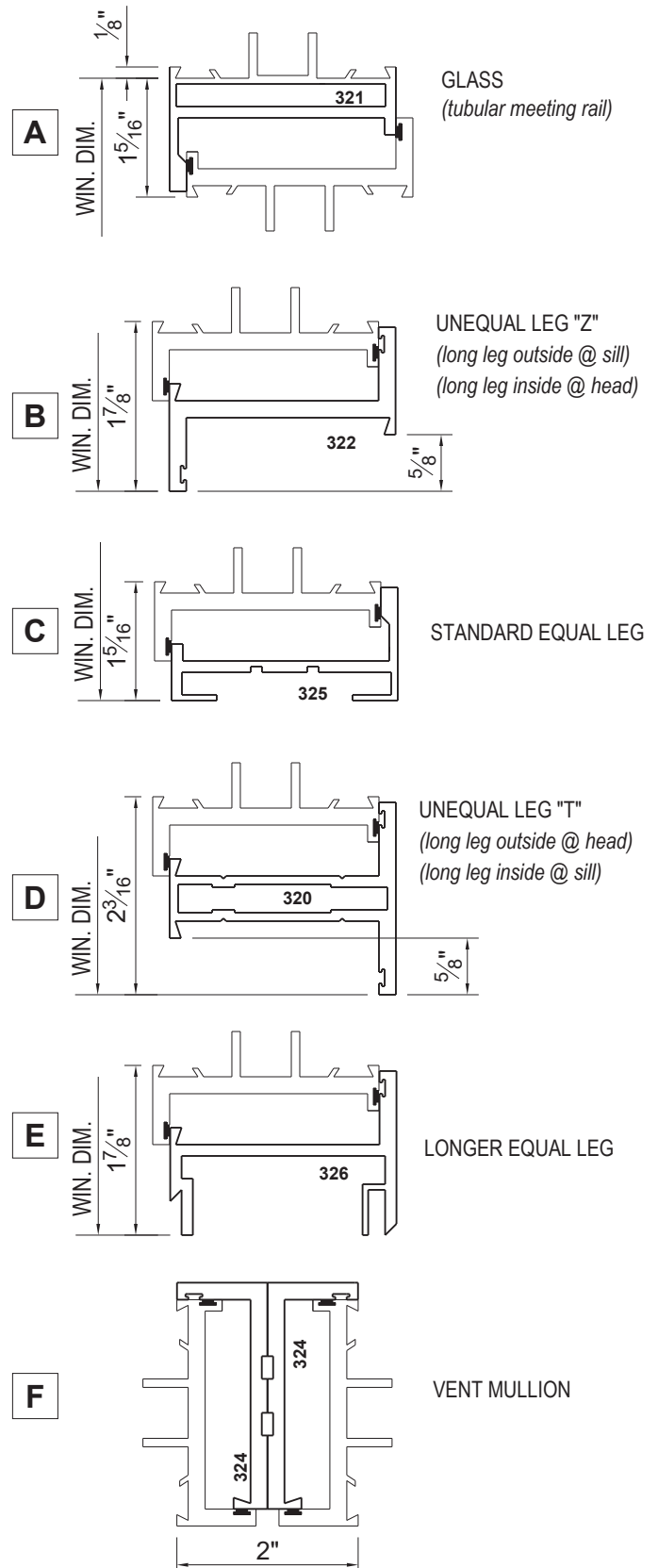
Center pivot ventilators can only use section # 324 at the jambs.
(Consult factory)



③

JAMB
SLIM PROFILE

Alternate pivoted ventilator sections that can be used at head or sill.



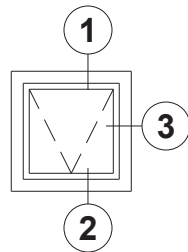
SCALE = HALF SIZE



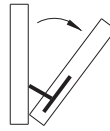
Since 1906

America's finest custom windows

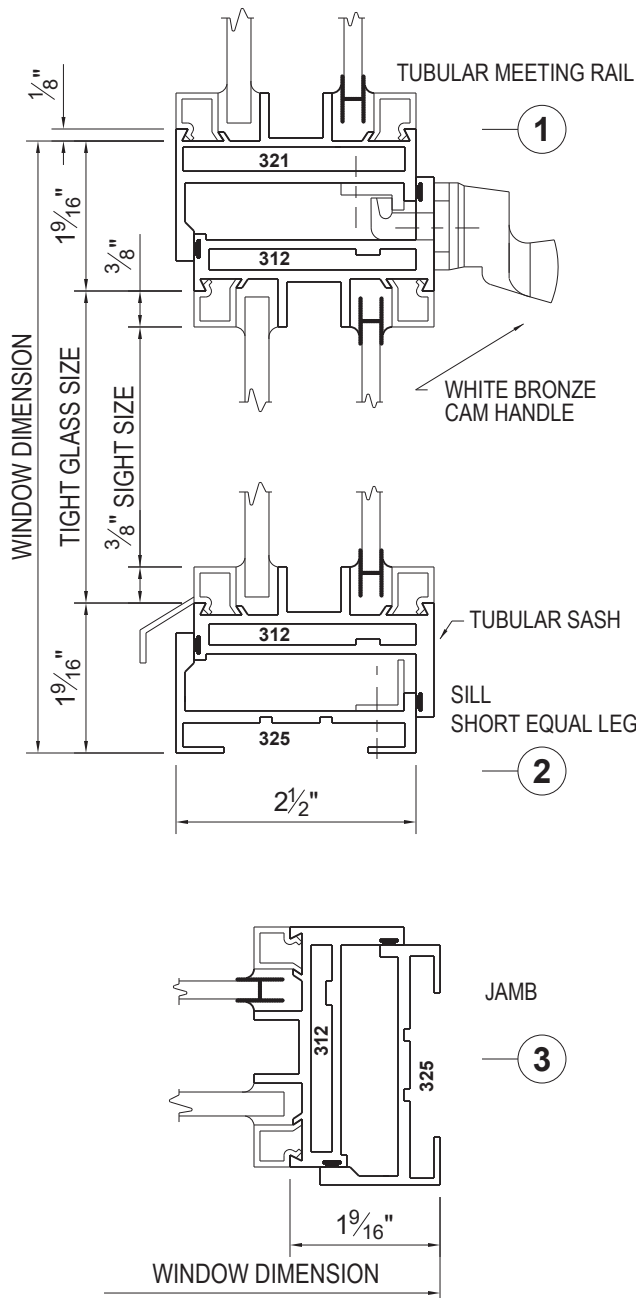
PROJECT-IN



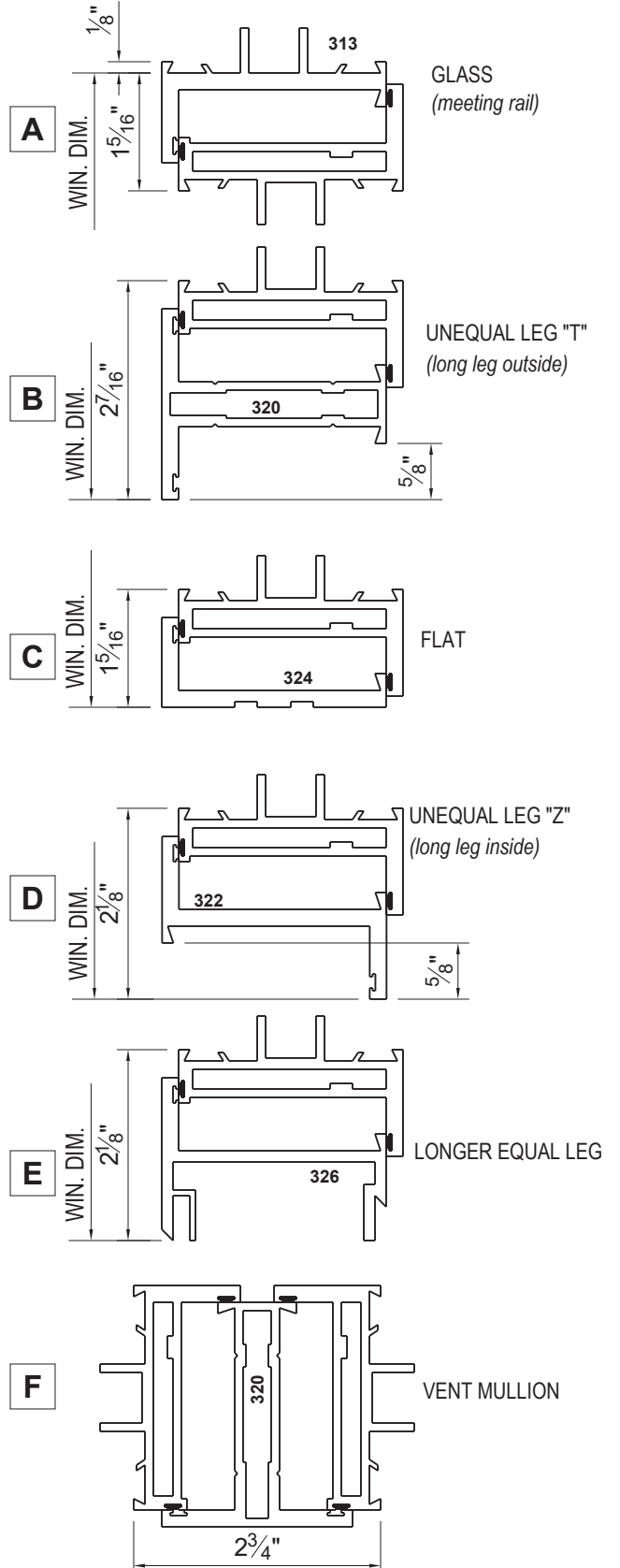
OPEN IN



Standard Bottom Ventilator
(glass on top, equal leg jambs and sill)



Alternate project-in ventilator sections that can be used at head, sill or jamb.



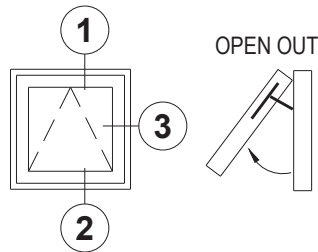
SCALE = HALF SIZE



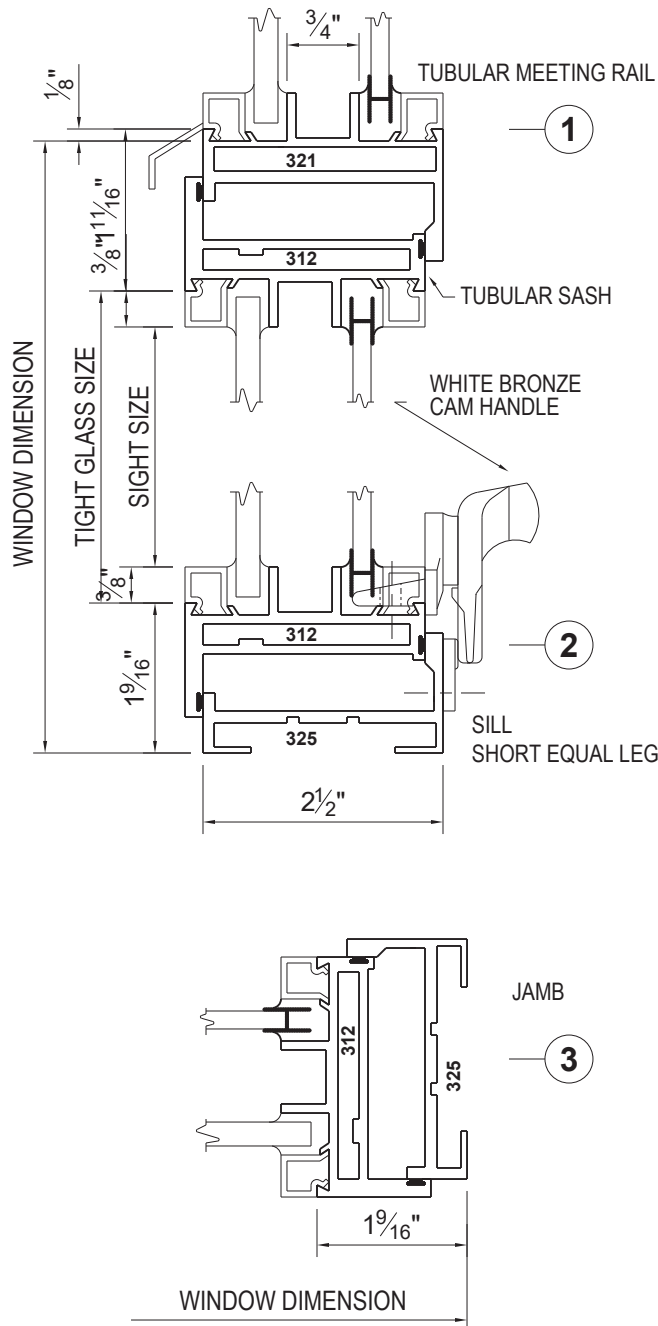
Since 1906

America's finest custom windows

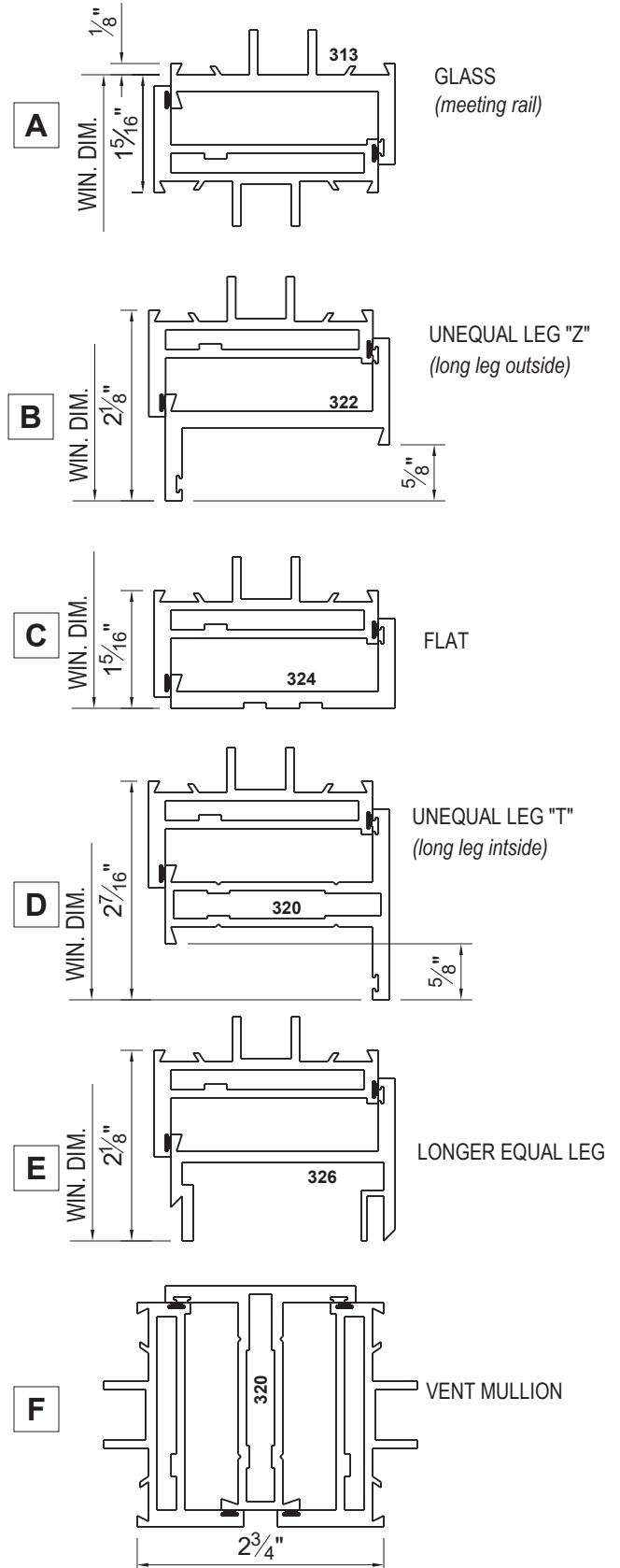
PROJECT-OUT



Standard Bottom Ventilator
(glass on top, equal leg jambs and sill)



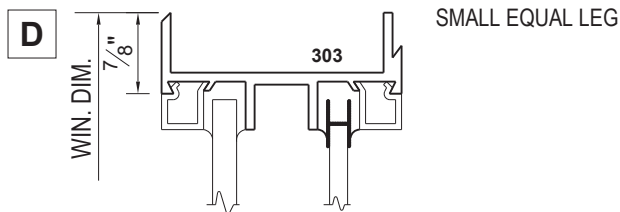
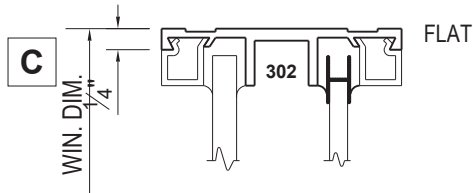
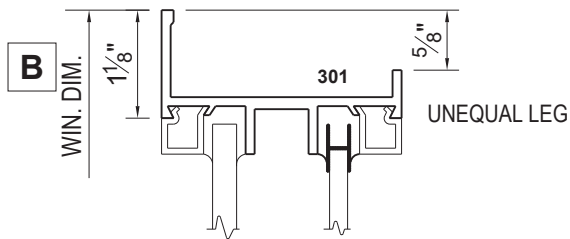
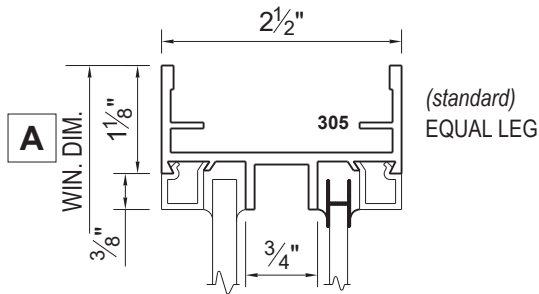
Alternate project-out ventilator sections that can be used at head, sill or jamb.



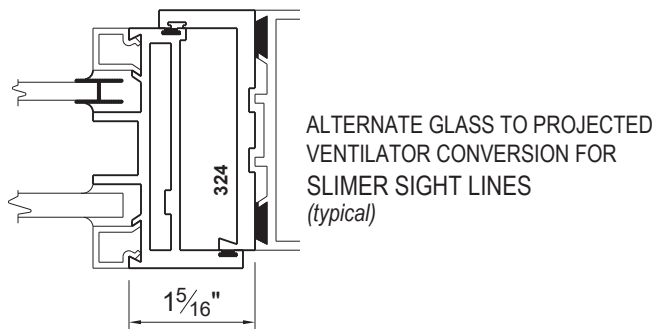
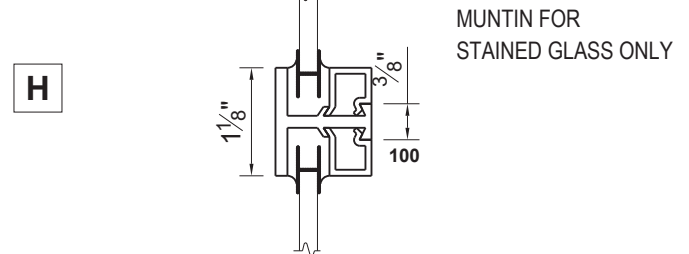
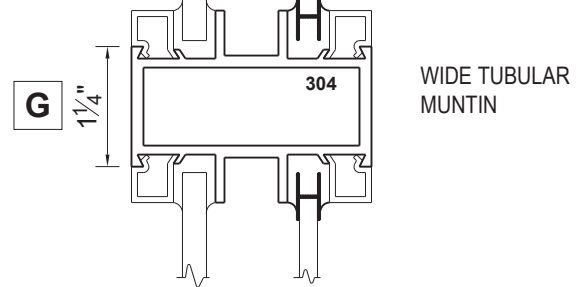
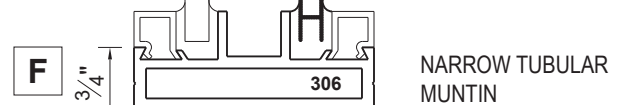
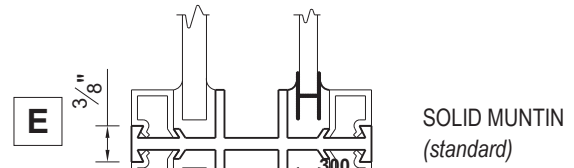
SCALE = HALF SIZE



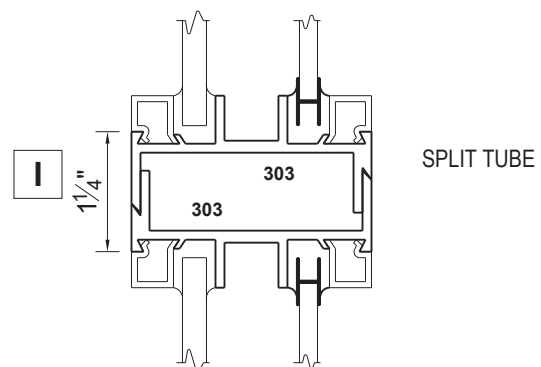
Fixed Perimeter Frame Sections



Muntins



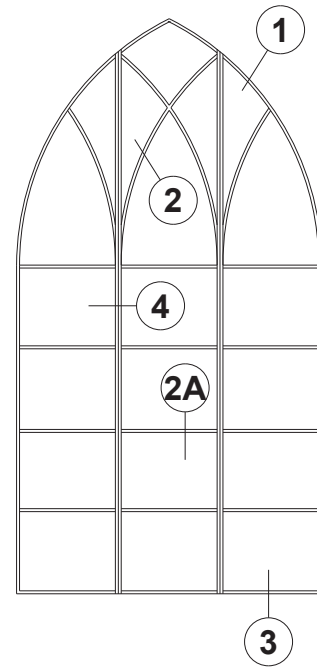
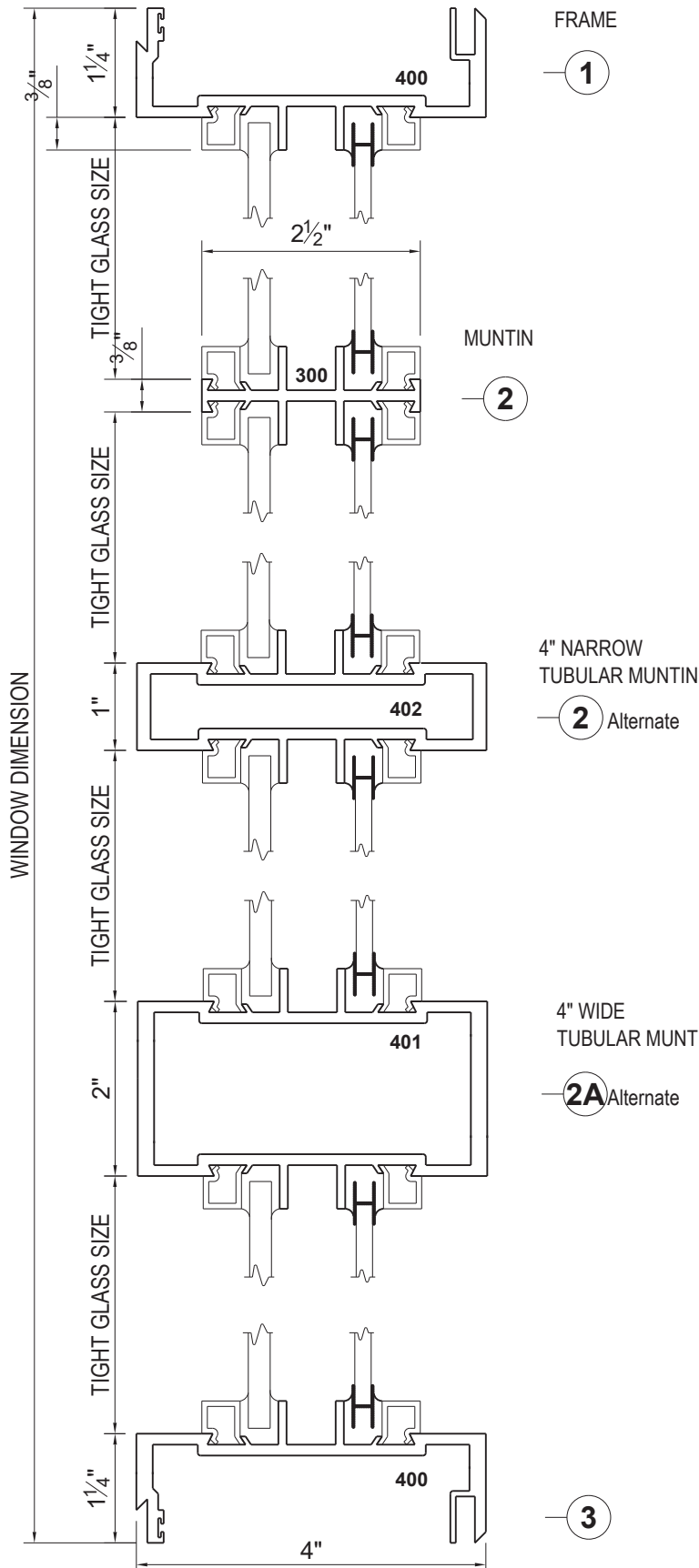
Vertical and Horizontal Stacking



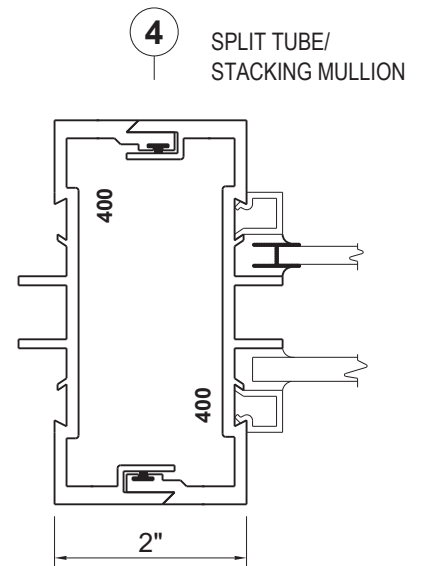
SCALE = HALF SIZE



The 400 Series is 4" deep and is used for large windows or for design variation. The 400 Series lines up with, and is interchangeable with the 300 Series. 300 Series ventilators can easily be incorporated into the 400 Series. All sections can be used horizontally or vertically.



Typical Elevation



SCALE = HALF SIZE